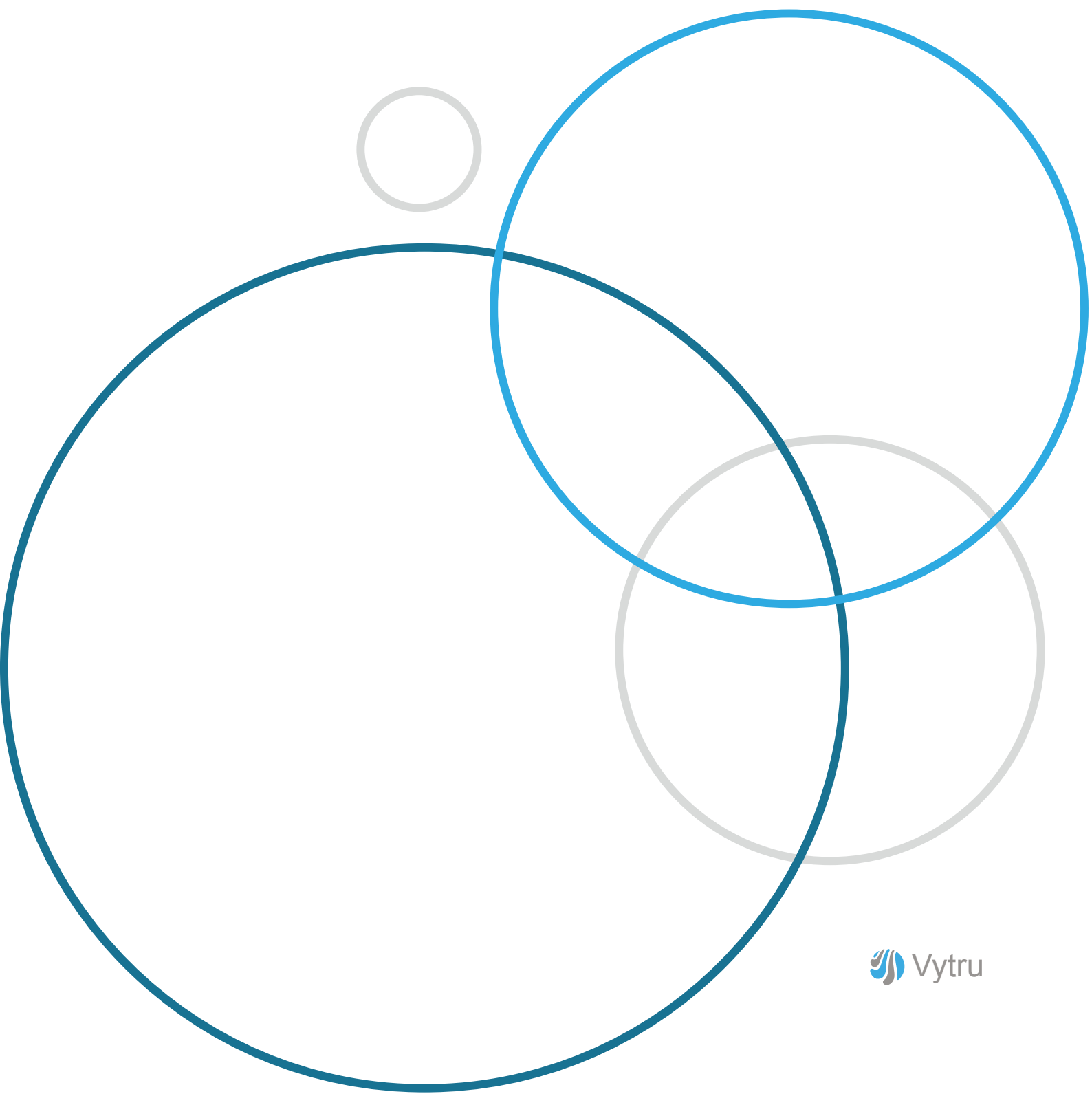


Vytru[®] RVC[®] System

Microsoft Lync Room Video Conferencing System

Getting Started Guide



What's in the Box?

RVC3000cc box contains:



The RVC Codec



Logitech ConferenceCam CC3000e Camera



Speakers

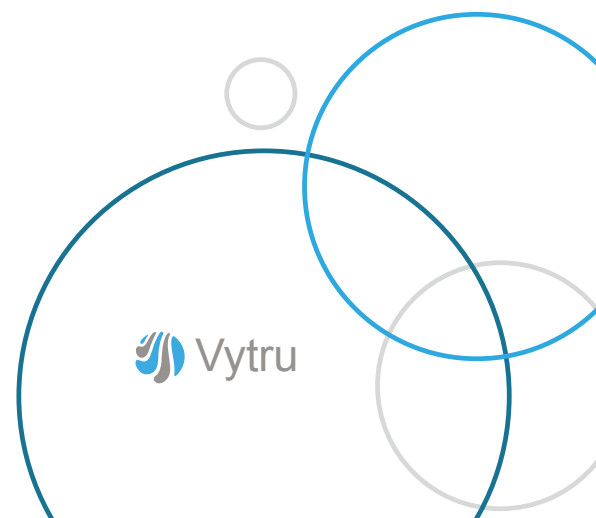
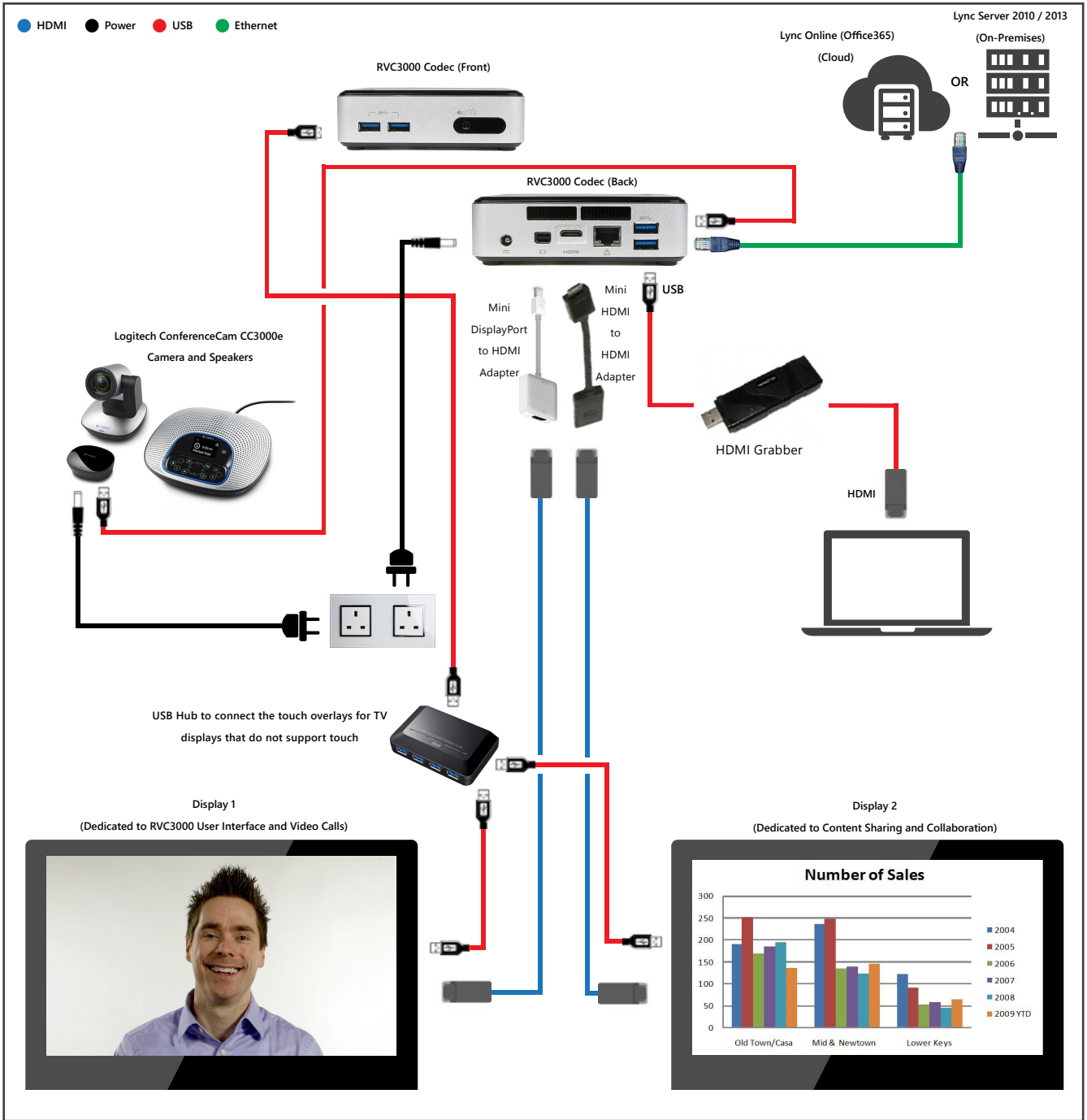


AirControl Remote Controller

The Accessory Kit contains these components:

- HDMI Grabber – USB Cable (from Grabber to NUC) – HDMI Cable.
- Mini DisplayPort to HDMI Adapter + HDMI Cable.
- AirControl – Charging Cable.
- Mini HDMI to HDMI Cable.
- VESA Mount bracket.

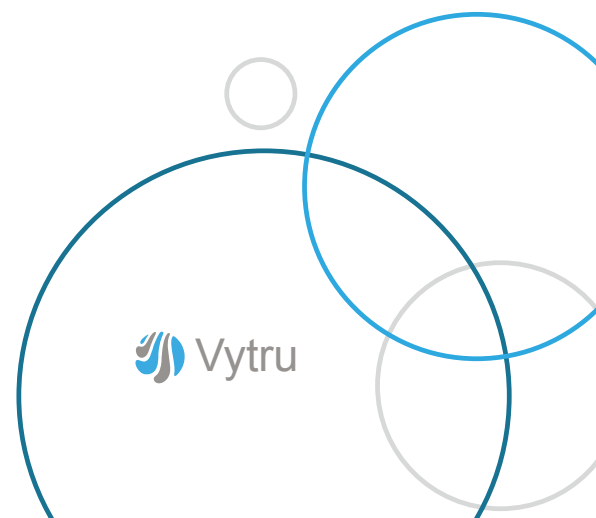
Installing RVC 3000 CC




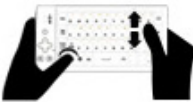



Using the Remote Control

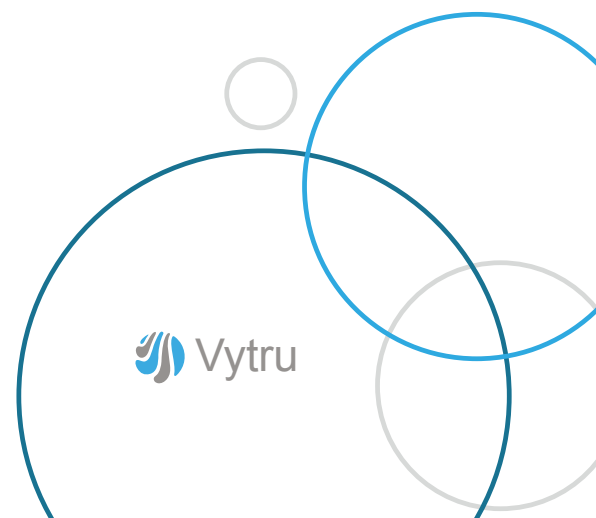
Air-Control recognizes your gestures and uses your hand movements on its pad so you can interact with the RVC system. You can start smoothly meetings, share content, annotate presentations, or collaborate on the whiteboard.

Host Description:



Using Instructions

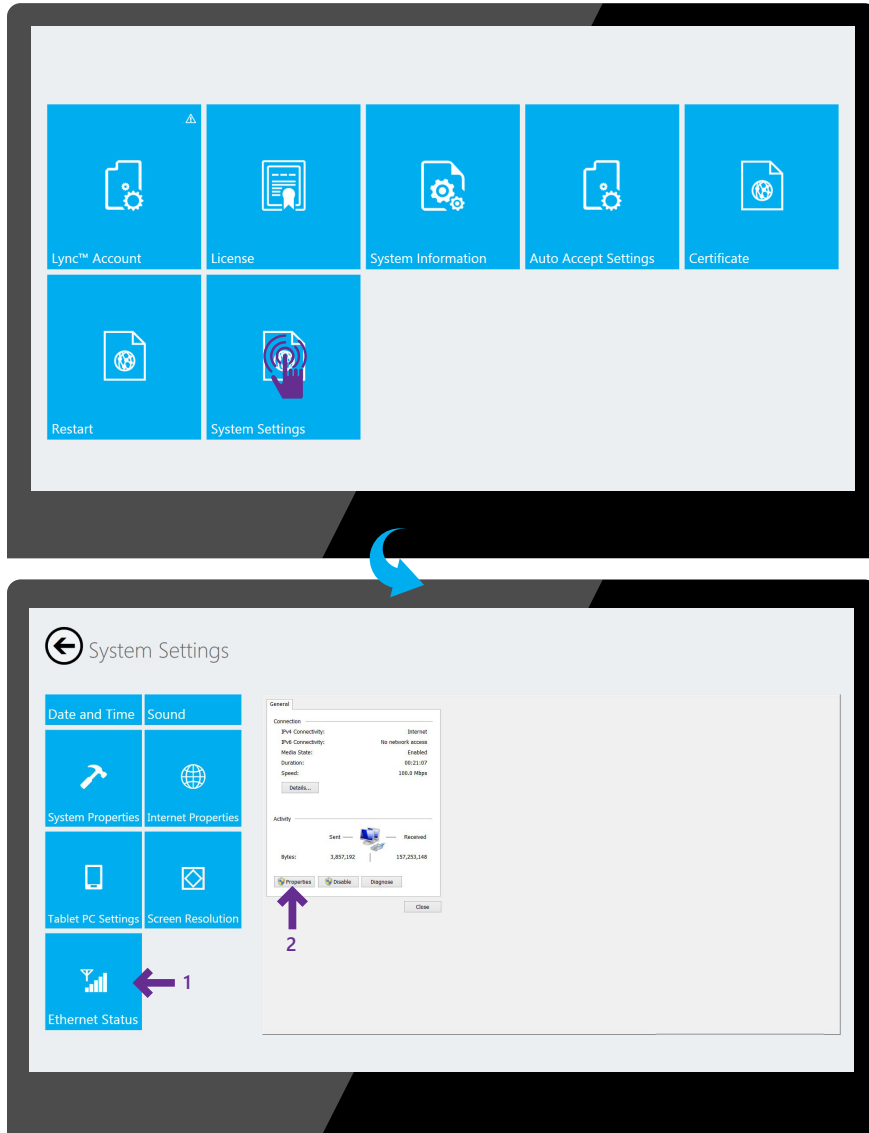
Type	Gesture	Instruction	RVC
A single finger		Slide or tap on touchpad	Moving cursor, mouse click and double click
Three fingers		Three fingers tap touchpad simultaneous	Get mouse right button function
Slide from right to left		Slide single finger from right to left	Display RVC charms menu
Slide vertically		Hold one finger on touchpad, another finger Slide up/down.	Slide up/down scroll contacts menu horizontally
Slide horizontally		Hold one finger on Touchpad, another finger Slide up/down.	Slide left/right scroll calendar horizontally
Zoom in/out		Two fingers zoom in/out gesture slide on touchpad	Zoom in/out photos/ Zoom in/out PDF.
Right& Left Click		Mouse left button-Enter key, Right button-Back key	Left Click / Right Click



Configuring the Account and Network Settings

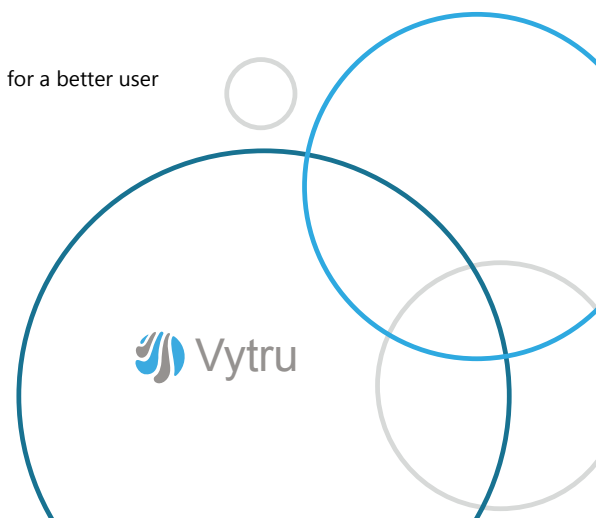
1. Configure your network settings.

- Your RVC3000cc is set to Use DHCP by default. This enables it to automatically obtain its IP address. If you want to change your network settings, use the arrow to navigate to system settings.



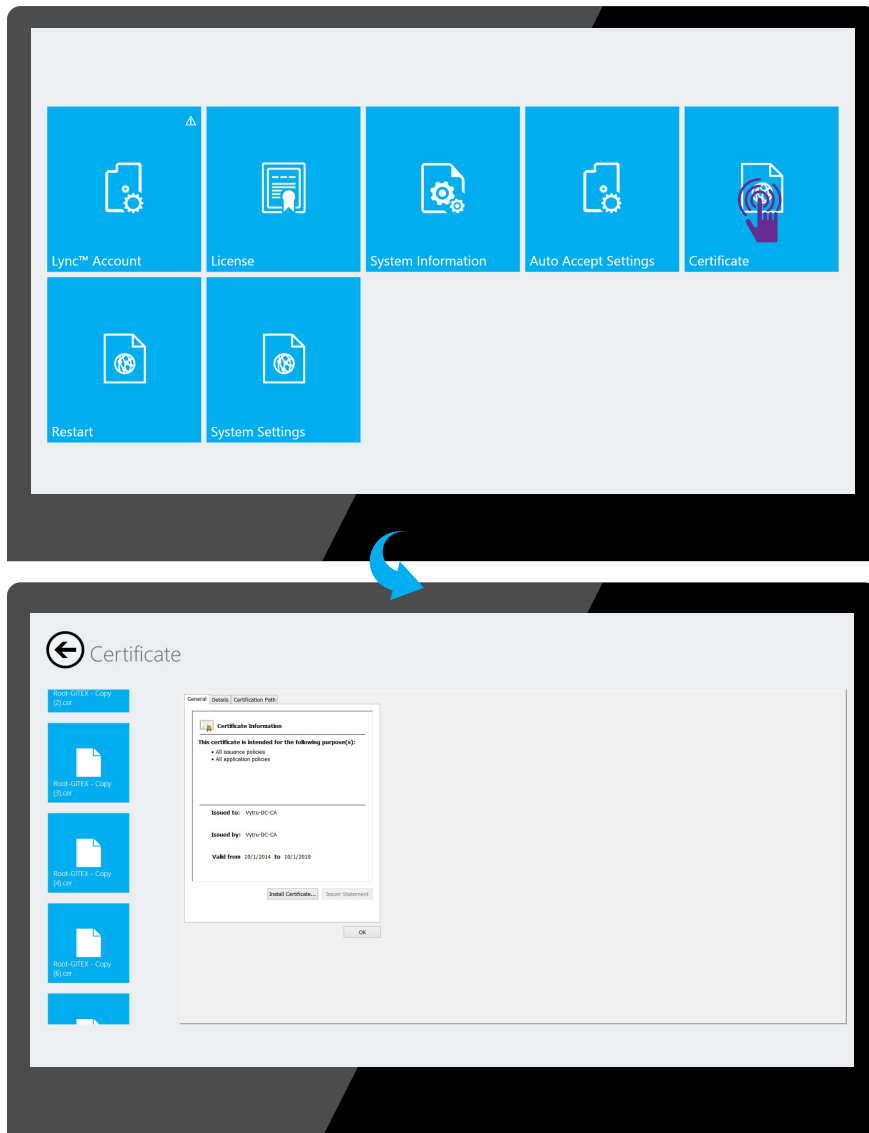
- Use the arrow to navigate to Ethernet Status then navigate to Properties (and configure your IP address manually). You can navigate to each text box, enter the appropriate setting.

Note: The Ethernet Status window is the same as windows' network settings window, for a better user experience.

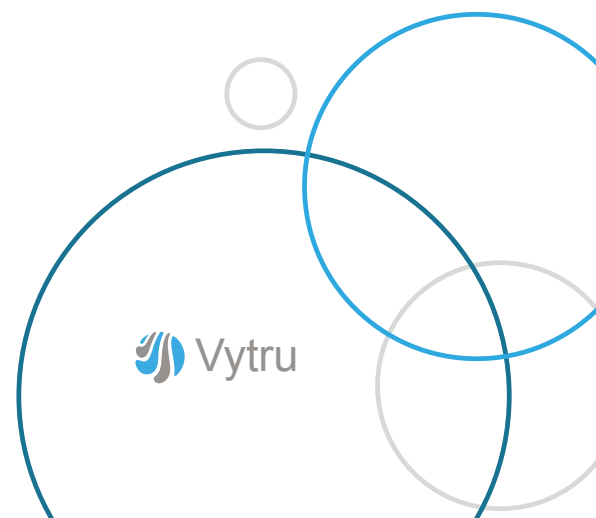


4. Configure your certificate settings.

- Use the arrow to navigate to Certificate.

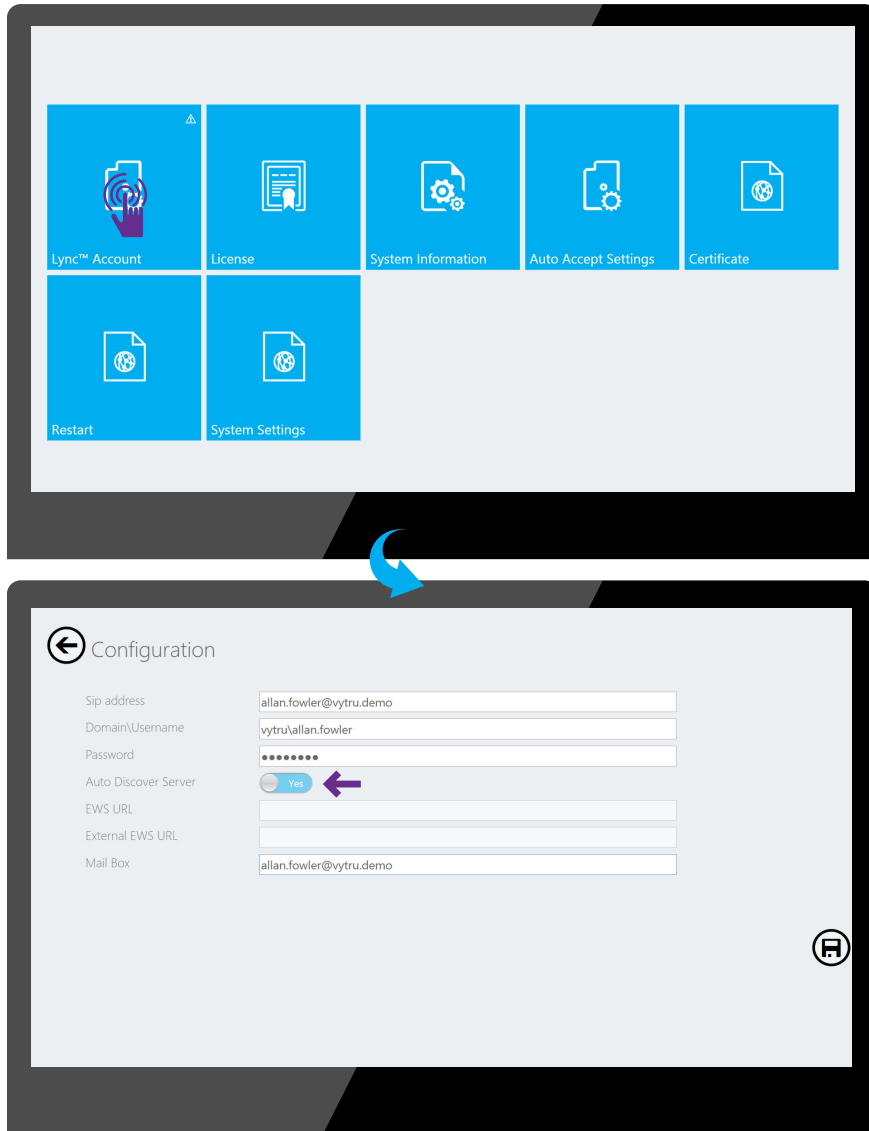


- Install the Lync certificate ONLY if you have a private certificate on your server. To install the certificate on the device put the required certificate on a flash memory and plug it on the device, install the required certificate from the flash memory after it's detected.

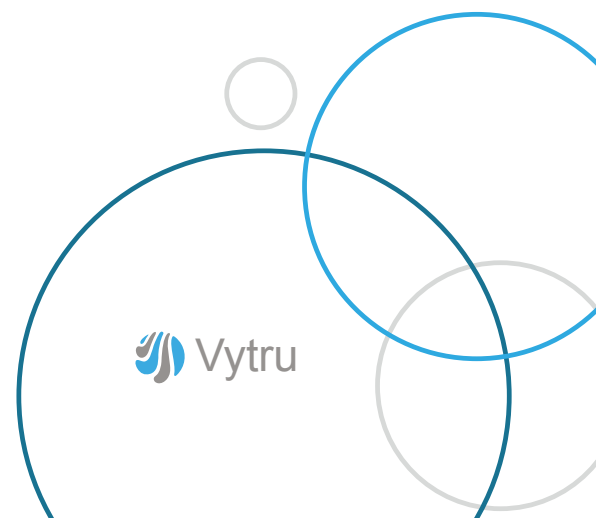


3. Configure your Lync account settings.

- Use the arrow to navigate to Lync account.

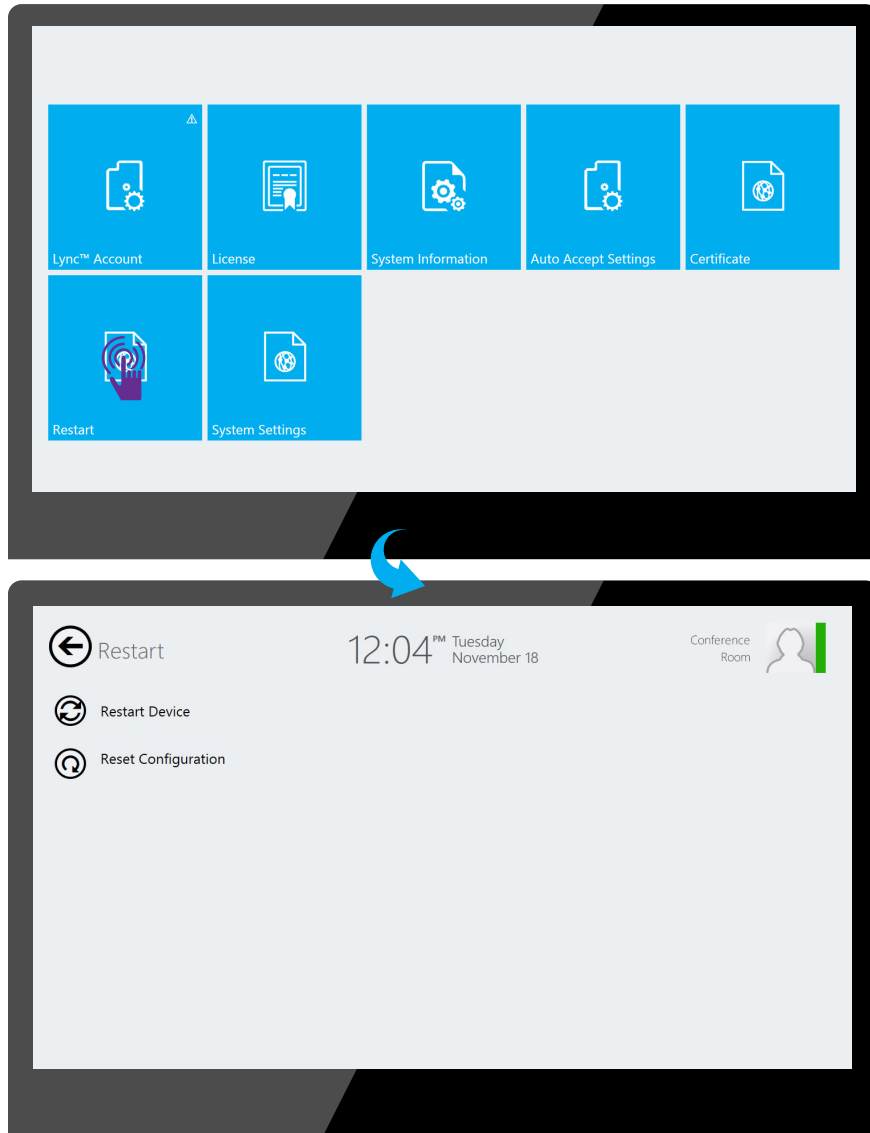


- Navigate to each text box and enter the required data (SIP address – Domain\username - Password), then you can check the Auto Discover Server button as yes and enter the Mail Box (the application will detect the EWS URC & External EWS URL automatically), if you want to enter the EWS URC & External EWS URL manually check the Auto Discover Server button as no and enter them manually and you won't have to enter the mail box.
- Hit save button to save the changes.



5. Restart Device.

- Use the arrow to navigate to Restart and choose restart device to submit the changes and to start to use the application.



Get in touch with us:

1.408.520.0966 sales@vytru.com

www.facebook.com/Vytru.uc

www.linkedin.com/company/vytru

www.twitter.com/Vytru



Video Conferencing Endpoints for Lync